

# Mitigating Climate Changes through Applying Strategic Environmental Assessment (SEA) in Spatial Planning

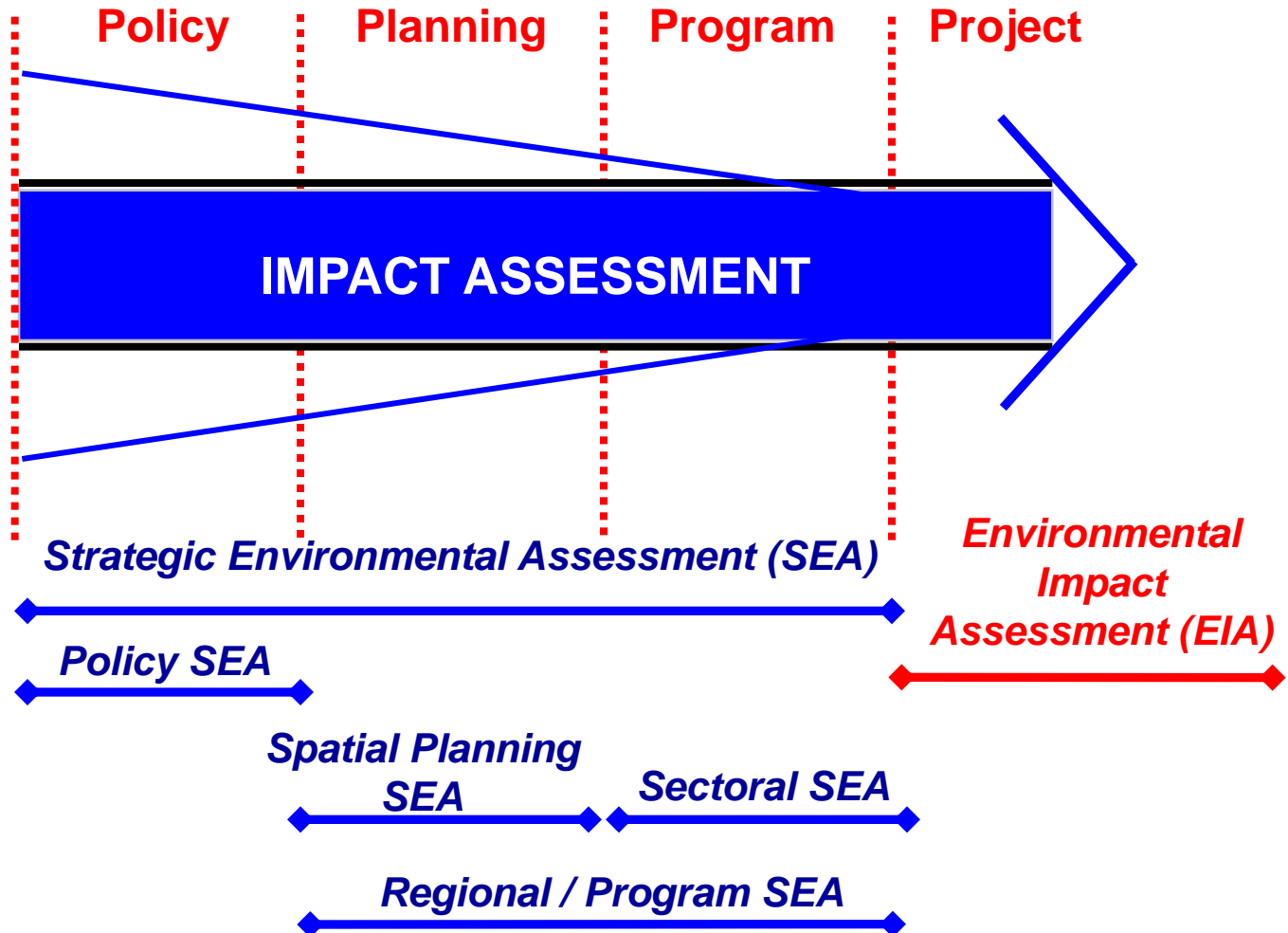
Hermien Roosita  
Deputy Minister to the Environment



# Strategic Environmental Assessment (SEA) in Indonesia

1. Integrating environmental consideration into project management level (Environmental Impact Assessment, EIA) has been developed since 2 decades ago (1986),
2. Latest research: policy failure contribute to natural resource degradation and environmental pollution in Indonesia
3. Integrating environmental effect & sustainable consideration into Policy, Plan & Programs (PPPs) become urgently needed.
4. Since 2007, Ministry of the Environment, Ministry of Home Affair and National Development Planning Board intensively develop regulatory framework & SEA Pilot Project.

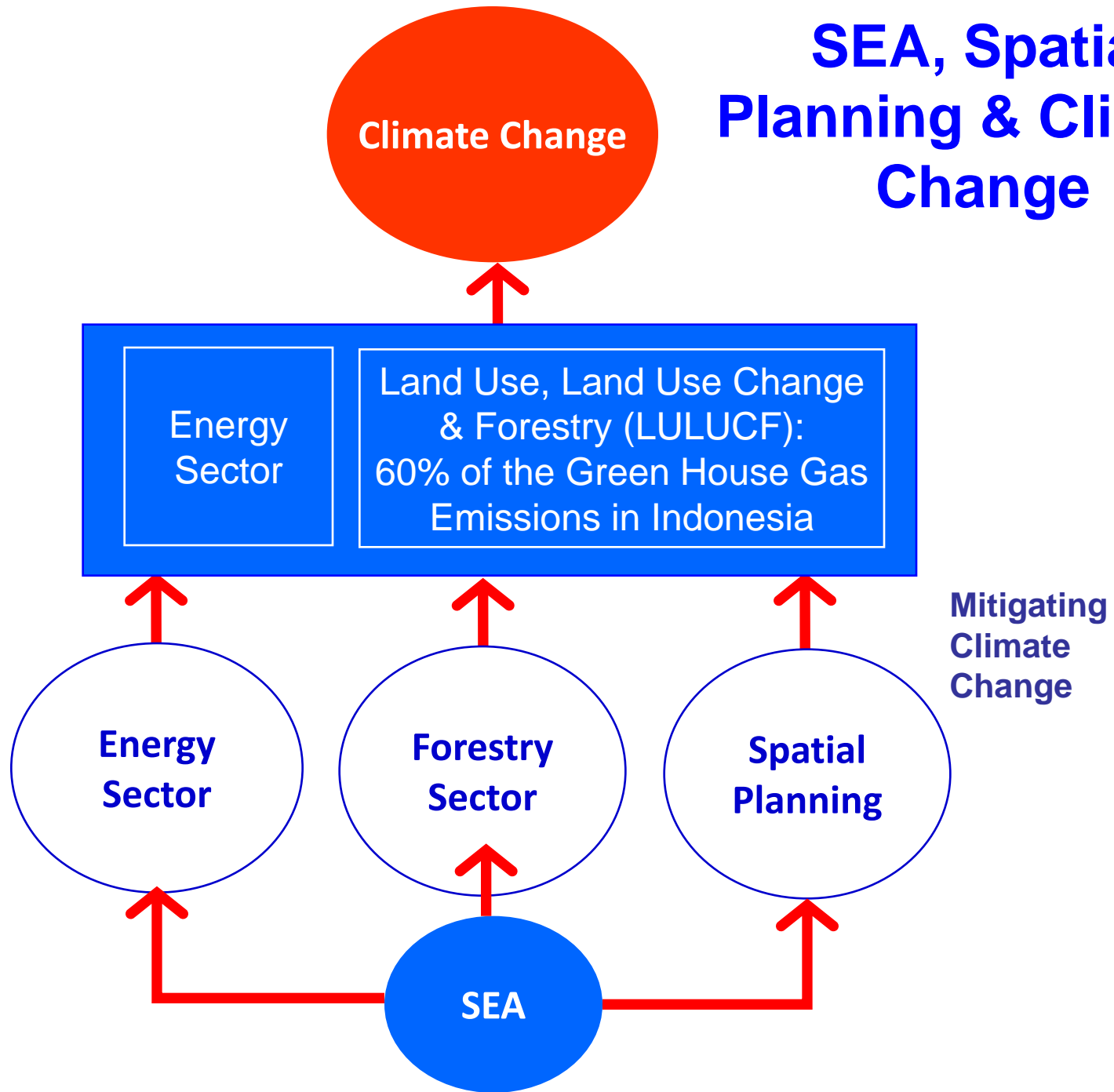
# Impact Assessment across Various Decision Making Level



## Policy, Plan & Program Mandatory to SEA

- Spatial Planning
- Long Term and Mid Term National Development Plan
- Long Term and Mid Term Local Development Plan
- Potentially increase cumulative effect in the long term due to
  - Climate change risk
  - Flood, land slides, dry, forest fire
  - Biodiversity degradation
  - Water resource degradation
  - Land use conversion
  - Increase the poor & threaten livelihood

# SEA, Spatial Planning & Climate Change



# 3 SEA's Principles in Indonesia

## ***Interdependency/Holistic***

The interdependency between country & local policies, central & local government; local & global interest.

## ***Balance***

Balance between production & conservation, economic & conservation; short term & long-term interest.

## ***Justice***

Prevent unequal distribution of benefit & impact of access & use of natural resources and the environment.



***Outcomes:  
Sustainable***

# Regulatory Framework

No SEA clause

Environmental Law  
(Law No 23/1997)

Transition

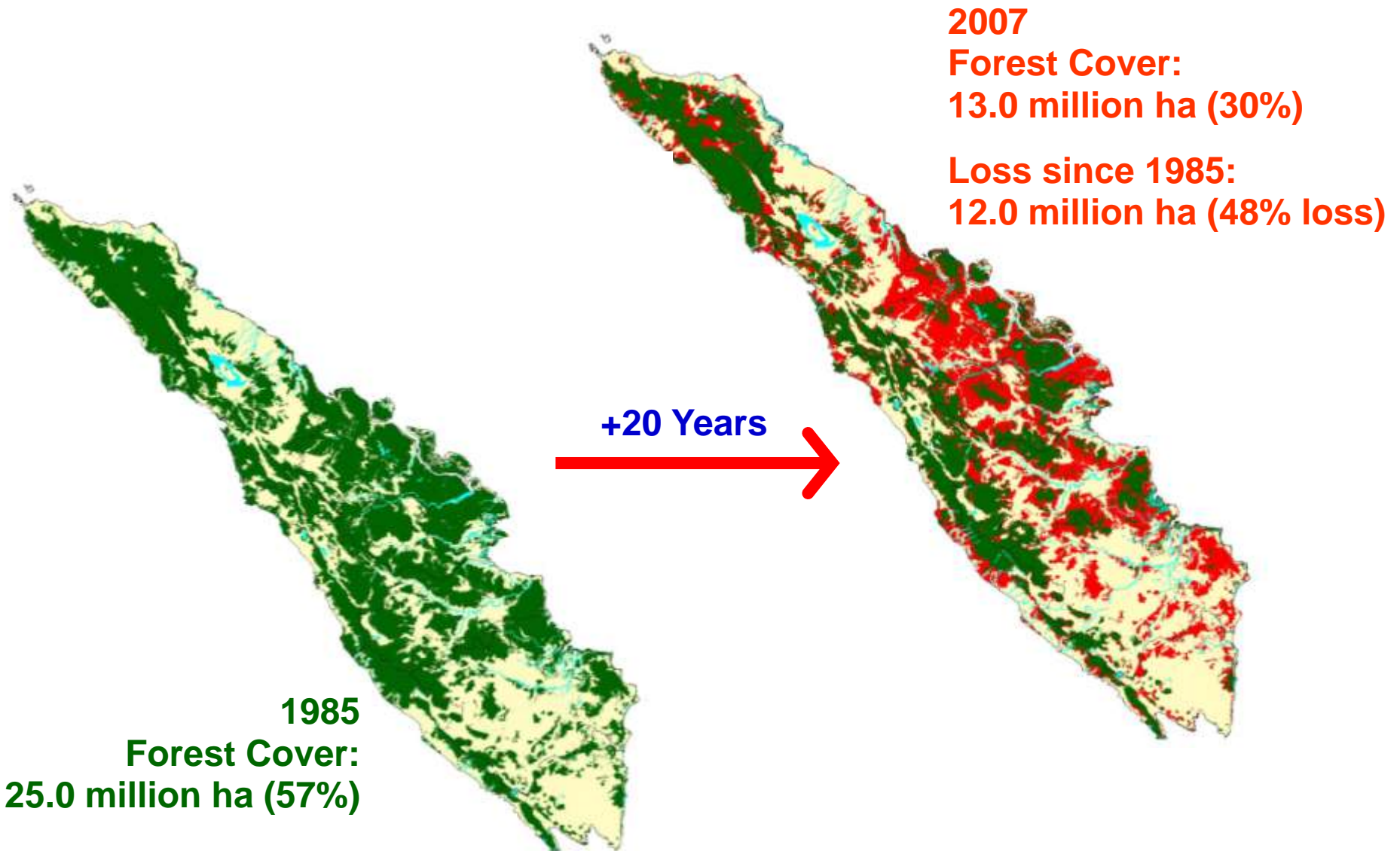
+ SEA clause

Proposed New  
Environmental Law

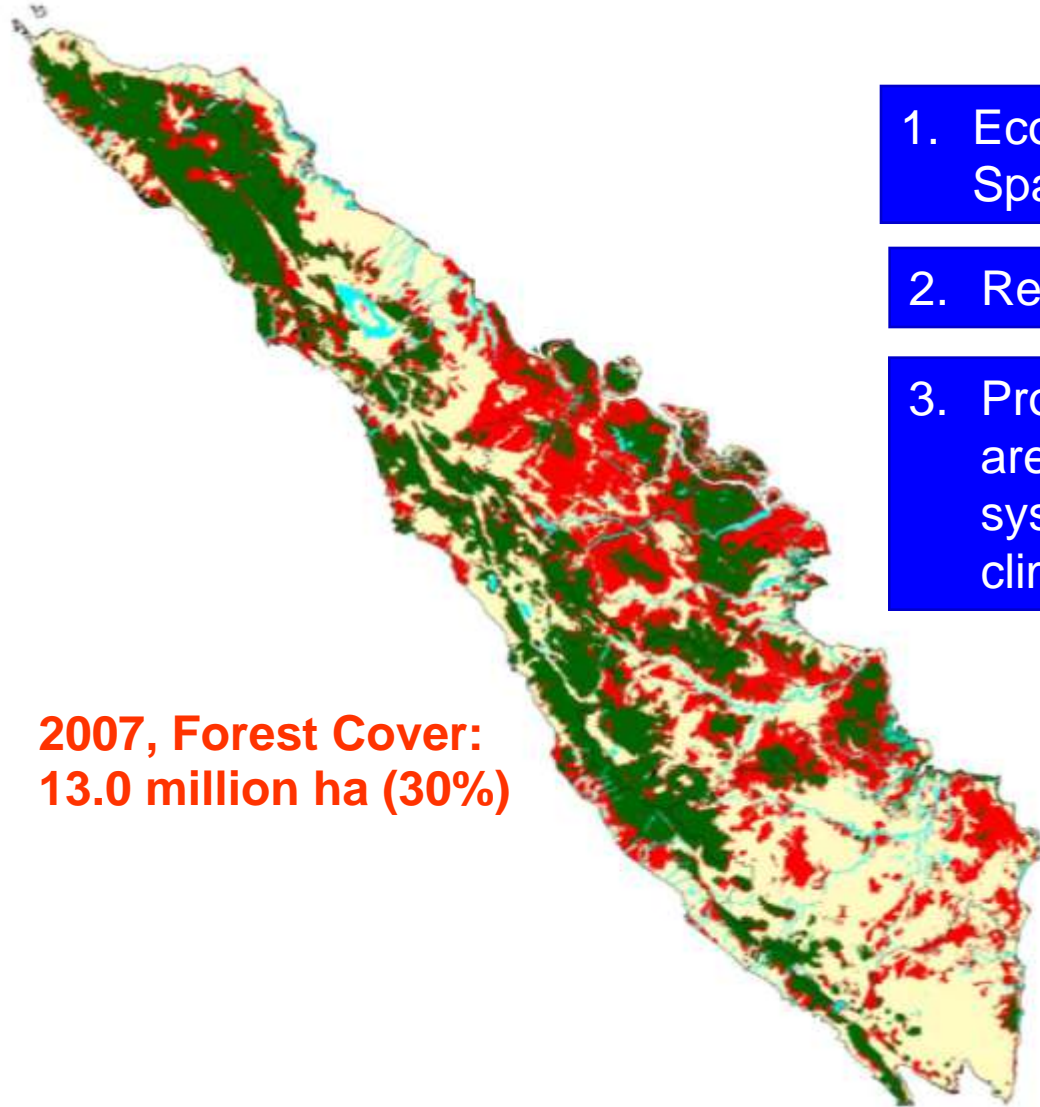
Proposed Presidential  
Instruction on SEA

Proposed Environmental  
Ministerial Decree SEA  
Technical Guideline

# Case: SEA for Presidential Regulation on the Spatial Planning of Sumatra Island



# Declaration of 10 Governors and 4 Ministeries for Saving Sumatra Island (Sept 1998)



**2007, Forest Cover:  
13.0 million ha (30%)**

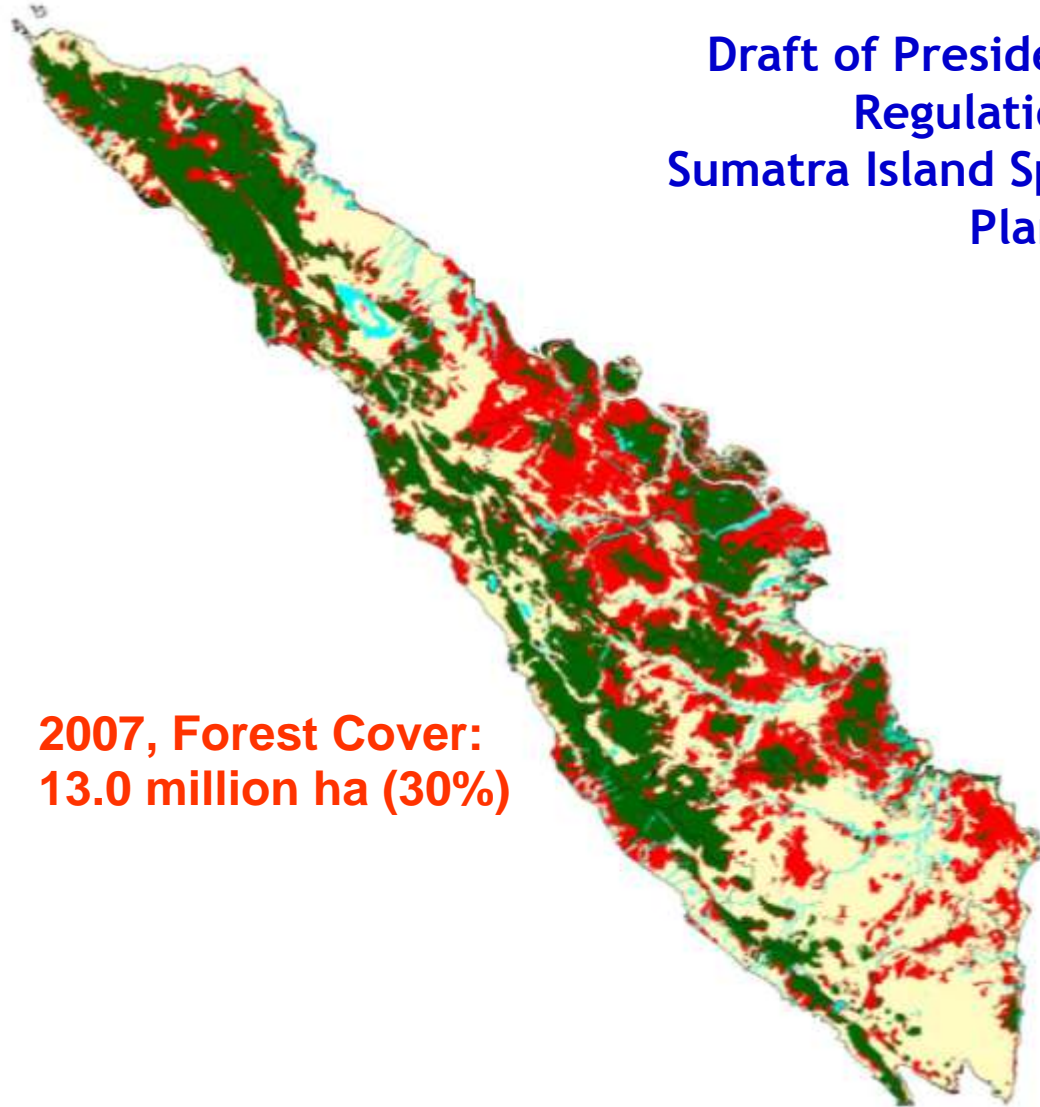
1. Ecosystem Based  
Spatial Planning

2. Restore Critical Areas

3. Protect importance  
area for life support  
system, biodiversity, &  
climate change

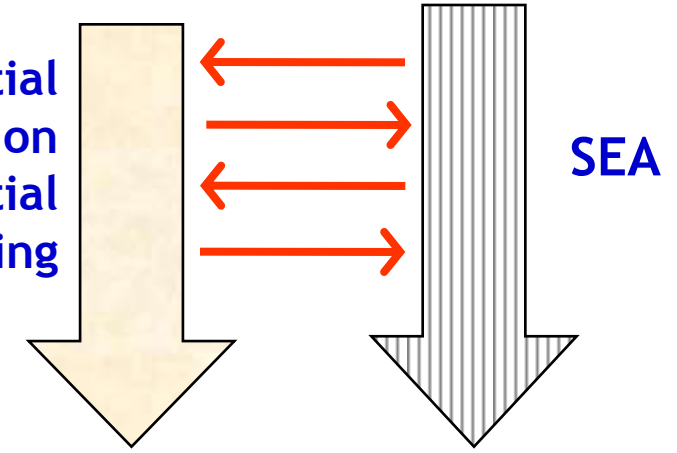
SEA

# SEA for (Draft) Presidential Regulation on the Spatial Planning of Sumatra Island



2007, Forest Cover:  
13.0 million ha (30%)

Draft of Presidential  
Regulation on  
Sumatra Island Spatial  
Planning



SEA

Final Version of  
Presidential Regulation  
on Sumatra Island Spatial  
Planning



# Conclusions & Recommendations

- A sustained land use and spatial planning would significantly reduce CO<sub>2</sub> emission from LULUCF (land use, land use change and forestry). In this context, SEA playing an important role.
- SEA for spatial planning should be introduced and socialized widely particularly to local government.
- Needed support from Netherland:
  - Capacity building for provincial as well as district government
  - Develop clearing house and knowledge management on impact assessment
  - Develop collaborative research between Indonesia & Netherland on SEA

**Thank You**